

**Greenway Technical Committee (GTC)**  
**10:00AM – Tuesday, September 19, 2017**  
**Icon Sport Center, 1060 47<sup>th</sup> Ave S, Park District Conference Room**

**Meeting Notes**

**I. Present:**

- Bill Palmiscno, Chair
- Catherine Johnson, MN DNR
- Dave Kuharenko, City of GF Engineering
- Sgt. Doug Wright, GF Police
- Jairo Viafara, MPO
- Chad Cutshaw, GF Fire
- Stephanie Erickson, GF Planning
- Reid Huttunen, EGF Parks & Rec
- Dr. Laura Munski, Dakota Science Center
- Kim Greendahl, City of GF Greenway

**II. Old Business**

**A. Bicycle Repair Stations Update:**

- The bicycle repair stations that were donated Scheels have been delivered.
- The GF station will be located along the trail in Lincoln Drive Park once the concrete pad has been completed.
- The EGF station will be along the trail in front of the Blue Moose on the wet side of the levee. Reid is waiting for to see if permit approval is needed from the U.S.ACE for the concrete pad.
- The EGF Campground has received their repair station from MN DNR. The concrete pad still needs to be poured. The repair station has been getting used even though it is not permanently placed yet.
- Everyone hopes to have the repair stations installed by the end of the year.

**B. Freezeway Update:**

- Nick Jensen met with the Bicycle, Pedestrian & Greenway Advisory Group (BPGAG) last week. The BPGAG approved the downtown location for the 2017 – 2018 Freezeway trail. They would like to connect the downtown rink to the Freezeway.
- This trail will be at least 600 yards in length.
- Nick was under the impression that the GF Park District would be filling the Freezeway frame with water. Bill stated that the GF Park District will not be responsible for filling the Freezeway trail with water. Kim will let Nick know that he needs to check with the Water Distribution Department for methods to fill and the costs that would be associated with the water usage.

- Kim is working with Howard Swanson, City Attorney, on a user agreement between the City of GF and Freezeway, LLC. This will be for the use of location on city property.
- The GF Park District Foundation will act as the fiscal agent for the Freezeway funds.

**C. Facility and Trail Naming Program:**

- The Facility Naming form has been combined with the GW Trail Naming form. The draft was reviewed and these suggestions were made:
  - Add a date to the document.
  - 1<sup>st</sup> paragraph – add “by the GW Tech Committee” then from “Grand Forks and EGF City Councils”.
  - 2<sup>nd</sup> paragraph – use “by the City Councils”.
  - Add process.
  - Add “Other” to “Facility I would like to name is:”. Also, add a blank line to write in other response.
  - Remove “I” from “I facility I would like to name is:”.
- Question was raised as to what is considered a trail segment. Is there a minimum or maximum length? There is no minimum or maximum length. Each application would be considered on a case-by-case basis. Points of interest, buildings, etc. would be used to determine a beginning and an end to the named trail segment.
- A sign will be placed on the trail for the name. Nothing about the trail name would be noted on the annual bikeway map.

**III. Bicycle, Pedestrian & Greenway Advisory Group Update:**

- September Meeting – nothing to report for the Greenway.

**IV. Agency Updates**

- A. City of GF Engineering:** Staff is looking at bikeway projects to apply for Transportation Alternative (TA) funding. Construction on 47<sup>th</sup> Avenue South from South 20<sup>th</sup> Street to South 34<sup>th</sup> St will happen next year.
- B. City of GF:** The Greenway will be busy this weekend with the first GW Takeover Festival hosted by HB Sound & Light. Kim will be meeting with group today. Set up has already begun.
- C. City of EGF:** Trail heads will remain open daily until October 1.
- D. GF Park District:** Staff has started to set up the outdoor hockey boards for the rinks this winter. Two (2) bids were received for building phase one of the skate park. The hope is to get phase one of the park up by the end of this year. The Rydell’s Annual Car & Bike Show raised funds for the Skate Park but Bill does not now much was raised yet..

How much the skate park can be developed will depend on the total amount of funds raised.

- E. Minnesota DNR:** The campground will be closing November 12 to accommodate the 63 campsite for the beet harvest. The water will be turned off in the middle of October. A fort made of twigs and branches has been discovered. Catherine is not sure who has been constructing it. It appears to be too intricate for transients to be building as it utilizes hand tools, nails, etc. Trees are being cut down to build this large fort. No items have been left behind to use for clues.
- F. MPO:** The MPO Staff Report was handed out at the meeting. The committee is invited to the Planning and Zoning Commission meeting at noon on October 12.
- G. GF Police:** Sgt. Doug Wright will be leaving his spot on the GW committee to go back on patrol. Duane Simon will be filling the GF Police Department spot on the committee. City Council is working with police to classify Town Square as a park so that it would close at 11pm by city ordinance. It will be a busy weekend due to several events taking place (Wild Hog Marathon, UND Football, GW Takeover Festival).
- H. Fire Department:** Bonfires have been spotted in the Greenway. The fire department does not actively look for these bonfires but will respond if a call comes in. With the river levels so low, about 3 ft of the river bank is available to be used. There is an ordinance against the bonfires and people will be cited if found.

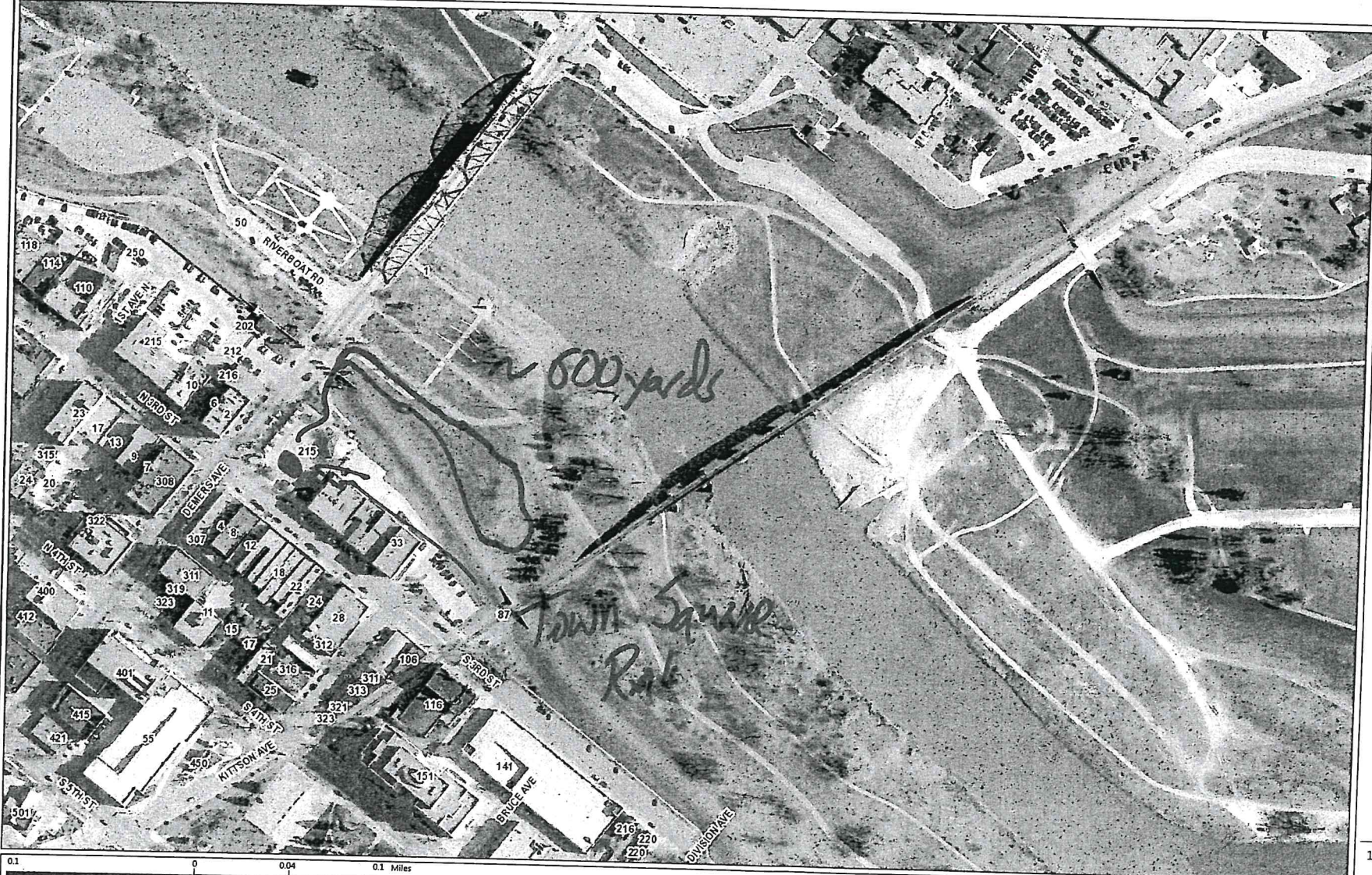
Minutes Submitted by: Theresa Flitter, Administrative Specialist

Minutes Approved by: Kim Greendahl, Greenway Specialist

Supporting documents:

- Aerial map – Freezeway location approved by Bicycle, Pedestrian & Greenway Advisory group
- Facility and trail naming program DRAFT application dated 9/14/17
- MPO Staff report

Community Green



- Legend
- Address Labels
  - Road Labels

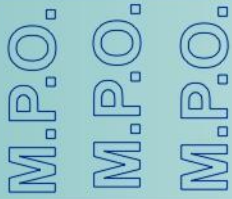
1: 2,462



NAD\_1983\_StatePlane\_North\_Dakota\_North\_FIPS\_3301\_Feet  
© Latitude Geographics Group Ltd.

This map is a user generated static output from an Internet mapping site and is for reference only. Data layers that appear on this map may or may not be accurate, current, or otherwise reliable.  
**THIS MAP IS NOT TO BE USED FOR NAVIGATION**

**Notes**  
This map was automatically generated using Geocortex Essentials.



# Grand Forks - East Grand Forks Metropolitan Planning Organization

## MPO Staff Report Greenway Technical Committee, Group, September 19<sup>th</sup>, 2017 Update on Bicycle & Pedestrian Activities

Update on Bicycle & Pedestrian Activities: Minnesota Bicycle Plan (Update)

### BACKGROUND:

A number of activities with the potential of positively impacting bicycle and pedestrian activities in the Grand Forks-East Grand Forks MPO Study Area are currently being advanced:

These activities include:

- a) MnDOT District 2 Bicycle Plan 2017-2018
- b) Update on Part II: Barriers, Impediments and Obstacles to Pedestrian and Bicycling Activities; and Part III: Existing Conditions Report of the Grand Forks- East Grand Forks Bicycle and Pedestrian Element
- c) Update of the North Dakota Active Transportation Plan

### ANALYSIS AND FINDINGS OF FACT:

- a) MnDOT District 2 Bicycle Plan 2017-2018

- Request for Input & Comments:

As part of the Public Engagement Process, the leading Project Team has developed an online interactive map (or Wikimap) as a tool to solicit feedback from stakeholders on the data analysis and bicycle routing results. On the top of the Wikimap page there is a legend that explains the content on the map, as well as instructions on how to provide input. The primary purpose of the Wikimap is to review the bicycle routing results (shown in dark blue lines) from the GIS analysis, and provide suggestions for alternative routes that are better suited for bicycling than the routing results shown. Please provide input on the East Grand Forks- Grand Forks area:

Wikimap link: <http://wikimapping.net/wikimap/MNDOTDistrict.html>

Deadline to provide input on this Wikimap tool is **Friday, September 29th**

Instructions to provide input on the Wikimap:

1. First, enter your email address when you first access the Wikimap.
2. Click on 'add route' in the top left of the page, then select 'Alternative Route'
3. Click on the beginning of the alternative route that you would like to suggest, and draw a line along the roadway or trail that you are suggesting. When you finish drawing the alternative route, select 'Done drawing' or double click on your last point.
4. After drawing your route, add a description about the route and explain WHY this route is a better alternative than the route shown from the analysis.
5. Remember, you can also provide comments on alternative routes that others have drawn on the Wikimap. To do that, click on the light blue lines, type your own comment in the text box, then click "Add Comment."

- Public Participation

Public engagement and project input for the District II Bicycle Plan will focus on receiving input about regional and local bicycle connections from existing stakeholder groups. Online engagement and email outreach materials have been sent to bicycle transportation-related professionals (i.e. city administrators, bike shop owners, SHIP coordinators) seeking their input. Engagement activities will be scheduled for December/January and will focus on receiving final input for local connections. In addition, a webinar may be available for these professionals to learn about the kind of input requested and how to provide input on the Wikimap. The October engagement schedule includes a presentation on **October 12, 2017 at the East Grand Forks Planning and Zoning Commission at 12:00 noon at the East Grand Forks City Council Chambers.** You are invited to attend.

- b) Update on Part II: Barriers, Impediments and Obstacles to Pedestrian and Bicycling Activities; and Part III: Existing Conditions Report of the Grand Forks- East Grand Forks Bicycle and Pedestrian Element Update

A number of input comments from stakeholders were received concerning Part I: Proposed Goals and Objectives. MPO staff is grateful to all of those stakeholders providing feedback. MPO staff is currently engaged in assuring these comments –as much as possible- find their way into the finalized version.

MPO staff submitted -for review- by the members of the Advisory Committee a draft version of:

- Part II: Barriers, Impediments and Obstacles to Pedestrian and Bicycling Activities; and
- Part III: Existing Conditions Report.

An Advisory Committee Meeting is currently under preparation for **September 22, 2017** from 9:30 am to 11:00 am at Room A102 Grand Forks City Hall. You are invited to attend and to actively participate in the discussion.

- c) Update of the North Dakota Active Transportation Plan

Kiley Horn, Alta, and KLJ are working on the initial phases to the North Dakota Statewide Active Transportation Plan. One piece of this first phase understands what efforts have already been completed by MPOs and other agencies around the state. MPO has provided information on Part II: Barriers, Impediments and Obstacles to Pedestrian and Bicycling Activities; Part III: Existing Conditions Report, and Appendix (containing tables and existing conditions related data).

#### **SUPPORT MATERIALS:**

To request your electronic copy of

- Part II: Barriers, Impediments and Obstacles to Pedestrian and Bicycling Activities; and
- Part III: Existing Conditions Report & Appendix

Please contact our MPO at 701-746-2656 or by email at <Jairo.viafara@theforksmo.org>