
THE GREENWAY 2012 SUPPLEMENT

Grand Forks, North Dakota

East Grand Forks, Minnesota



GREENWAY VISION STATEMENT

“The Red and Red Lake Rivers Greenway will protect residents of Grand Forks and East Grand Forks from flooding, provide opportunities for economic growth, improve and restore ecological stability of the river corridor, link residents and tourists to four seasons of recreation and transportation facilities, provide linkage between the cities, preserve and promote the history and culture of the region through education, and improve the quality of life for future generations.”

-Written by workshop participants (residents of Grand Forks, ND and East Grand Forks, MN) and prepared by Greenways, Inc. and the US Army Corps of Engineers as part of the Greenway Plan of September 2001.

www.greenwayggf.com

Contents

Acknowledgements 5

Description 7

Executive Summary 9

Management and Organization Framework 11

Operations 15

Funding 19

Programs 25

Marketing and Promotions 27

Annual Events Held in the Greenway 29

Greenway Agencies Contact Information 31

LaFave Park, East Grand Forks Concept Plans 33

Park Maps 38

Appendices 45

Acknowledgements

This document is a supplement to the original Greenway Plan of 2001. It is a summary of the construction and management of the Greenway over the past ten years. This document was written and edited by Maegin Rude and Kim Greendahl, City of Grand Forks Greenway Specialist.

The Greenway Technical Committee serves as a technical advisory board to the managing agencies of the Greenway. Each of the four managing agencies provides staff to develop and manage the Greenway. A special thank you to the past staff that have served on the committee and the current staff that continue

to support this effort - Dave Aker, City of East Grand Forks, Park and Recreation Dept.; Melanie Parvey and Kim Greendahl, City of Grand Forks; Bill Palmiscno, Grand Forks Park District; and various staff from the Minnesota Department of Natural Resources.

The success of the Greenway depends on technical advice and guidance from many sources. Thanks to the Greenway partner agencies and individuals who have dedicated time and provided technical support to the continuing development of the Greenway. Greenway Technical Committee members thank the partner agencies for their assistance with the development of the Greenway: Dakota Science Center, Floan-Sanders, Inc., Grand Forks/East Grand Forks Metropolitan Planning Organization, National Audubon Society, ND Game & Fish Department, Northwest Regional Development Commission, Options, Red River Hookers, Red River Snowmobile Club, Resource Conservation & Development, UND Recreation & Leisure Services, and US Fish & Wildlife Service.



A beautiful view of the Greenway

Description

For the purpose of this plan, the “Greenway” refers to the physical space controlled by the City of Grand Forks, City of East Grand Forks, Grand Forks Park District, and the Minnesota Department of Natural Resources. This is generally described as the wet side of the toe of the levee adjacent to the riverbank.



View of the Greenway

Executive Summary

The United States Army Corps of Engineers developed the initial plan for the Greenway, in association with the North Carolina based firm Greenways Incorporated, after the flood of 1997. In 1998 the City of Grand Forks commissioned Greenways Incorporated to build on the original vision for the Greenway and create a comprehensive Greenway Plan. A series of public meetings were held in both communities to gather ideas for the Greenway. This information was combined with an inventory of resources to create a guide for construction and management of the Greenway.

The Greenway Plan defined a strategy to build an outdoor recreation facility for the Greater Grand Forks area. A portion of the Greenway Plan was approved by the Grand Forks City Council in September 2001. This document was used as a conceptual guide for building and managing the Greenway.

It has been ten years since the Greenway Plan was produced by Greenways Incorporated and adopted by City Council. The communities worked hard to stay true to the core vision of the original plan in organizing and

building the Greenway. Several projects in the original plan were eliminated during construction of the Greenway. A lack of funding, community resistance, and land use plan were all reasons for removing projects from the final construction plans. Citizens continue to submit requests for additions and improvements for the Greenway as recreation and visitor needs change.

The Greenway provides a unique opportunity for year-round outdoor recreation in the heart of Greater Grand Forks. The Greenway also provides a source of economic development through development of special events that attract participants from around the region. Features like two golf courses, three disc golf courses, paved trails, trail heads, shore bank fishing sites, campground, and four boat ramps provide a high quality of life for the community.

This document is a supplement to the original Greenway Plan and provides a summary of Greenway development over the past decade. Areas covered in this document include an outline of funding sources, management and maintenance.

Management and Organizational Framework

The development and construction of the flood protection system and Greenway required a cooperative effort by many departments and agencies. The Greenway Alliance was established in 1998 to work through the issues associated with the construction and governance of the Greenway.

This group oversaw the creation of the Greenway Design Palette, Greenway Plan, and the establishment of the Greenway governance structure. Membership on the committee included representatives from both cities - federal, state, and local agencies with expertise in a variety of recreation management fields.

After the publication of the Greenway

Plan, the Greenway Alliance was no longer necessary, but the managing agencies continued to meet and discuss ongoing management issues. The Greenway Technical Committee was formed after the Greenway Alliance concluded their work on the project.

The Greenway Technical Committee serves as a technical advisory board to the managing agencies of the Greenway. Membership of the committee includes representatives of the four managing agencies and other parties interested in the development of the Greenway. The Greenway Technical Committee has no governing authority but serves as the primary mechanism for the four managing agencies to discuss Greenway management issues. Meetings are held bimonthly and are open to the public. Staff from the four managing agencies meets on the alternate months.

The four managing agencies of the Greenway are:

- City of East Grand Forks
- City of Grand Forks
- Grand Forks Park District
- Minnesota Department of Natural Resources



Beautiful view of the Greenway on a sunny day

LAND OWNERSHIP

Prior to the flood of 1997, property along the Red River was owned by both private and public entities. Complete ownership of this land by the City of Grand Forks was necessary to implement the construction of the flood protection project and ensure access during high water events. The City of Grand Forks owns all the land within the Greenway on the Grand Forks, ND side of the Red River.

The City of East Grand Forks owns the majority of the approximately 1,300 acres of Greenway located in Minnesota. The Minnesota Department of Natural Resources owns the Red River State Recreation Areas Campground and the River Heights Trailhead area.

STAFFING

After the completion of the flood protection project in 2008, the operations, maintenance and management of the Greenway became the responsibility of both cities. In Grand Forks, this work is coordinated through the Public Works Department. The Grand Forks Park District manages four major recreational areas within the Greenway, through a lease agreement with the City of Grand Forks. The park areas managed by the Grand Forks Park District on behalf of the City of Grand Forks

are Riverside, Kannowski and Lincoln Drive Parks, and the Lincoln Drive Golf Course.

The City of Grand Forks employs one full time staff person to oversee the daily operations, maintenance, promotion, and public relations of the Grand Forks portion of the Greenway. The Greenway Specialist position was funded as a part of the construction project when the position became permanent. This position is funded by the flood protection system and Greenway fees.

Maintenance for the East Grand Forks portion of the Greenway is the responsibility of the Parks & Recreation and Public Works Departments. The City of East Grand Forks, in partnership with the Minnesota Department of Natural Resources, hires seasonal staff to manage the Red River State Recreation Area, including the campground. This staff handles the reservations, point of sale, rules and regulations, reporting, guidelines, and procedures. The campground is typically staffed 8:00 am to 10:00 pm from Memorial Day to mid-September.

CITIZEN INPUT

Citizen input is an important part of the management and development of the

Greenway. The original flood protection system designed by the US Army Corps of Engineers was completed by 2008 but the Greenway continues to evolve as trends in recreation and visitor preferences change. Greenway users have been instrumental in that evolution. Several features have been added to the Greenway as a result of citizen input and requests. There are two opportunities for citizen involvement in the Greenway: the Greenway Technical Committee and the Greenway & Trail Users Advisory Group.

The Greenway & Trail Users Advisory Group is open to local citizens who share an interest in the development and use of the Greenway and trails in the Greater Grand Forks community. Meetings are held the second Tuesday of every month.

The Special Projects request form gives citizens the opportunity to submit an idea for an addition or improvement to the Greenway. A completed request form is reviewed by the staff of the Greenway Technical Committee to determine its feasibility within the Greenway. If the request is approved for further evaluation, a member of the committee will guide the request through the proper channels of their organization. If the request is not feasible within the Greenway but fits better in a different area of the community, the citizen is directed to the appropriate community contact.



Enjoying a day of golfing at Lincoln Drive Golf Course in Grand Forks

Operations

RULES & REGULATIONS

To help avoid confusion for the user and law enforcement officials, the Greenway Technical Committee began work on developing a set of consistent regulations for the governance of the entire Greenway system in early 2003. The result of that effort was the Greenway Rules and Regulations, which represents common regulations and use guidelines of the managing agencies.

In 2006 the Grand Forks City Council adopted a series of ordinances based on the Greenway Rules and Regulations. These ordinances are specific to the Greenway and not already covered in city ordinance. The City of East Grand Forks adopted the Greenway Rules & Regulations by resolution, not by ordinance, in 2005. Areas within the Greenway and owned by the Minnesota Department of Natural Resources are governed by state laws, which the original Greenway Rules & Regulations were based.

EMERGENCY RESPONSE PLAN

The location and landscape of the Greenway along the river can present problems when emergency services are needed. Determining a location for an emergency call can be difficult

when prominent landmarks are not readily present. In 2010 the Greenway Technical Committee adopted a plan to place signs along the trail to provide trail distances and points of reference for users. This plan will be expanded to the larger metropolitan trail system in the coming years.

USER CODES OF CONDUCT

The managing agencies of the Greenway recognize the potential of user conflict on the trails and other Greenway facilities. The committee continually seeks opportunities to provide a high level of user enjoyment through user education.

MAINTENANCE

The maintenance of the Greenway covers a wide variety of topics and is a substantial undertaking for city staff. Discussion about the ongoing maintenance of the Greenway began early in the construction process and addressed both the flood protection and recreation components of the system.

In Grand Forks, the storm water division of the Public Works Department is responsible for maintaining the integrity of the flood protection

system (floodwalls, earthen levees, pump stations and diversion channel). The streets division maintains the recreational features of the Greenway not already covered through agreements with other agencies or maintenance contracts.

In East Grand Forks, maintenance is managed by the Public Works Department. The Parks and Recreation Department oversees the development of Greenway features.

Staff also relies on a variety of outside agencies for assistance on things like forestry, recreation management, special events, and riparian restoration. These partnerships provide a beneficial network of expertise in a wide variety of areas pertaining to the maintenance and development of the Greenway.

Private contractors provide many of the services necessary to properly maintain the Greenway. Contracts are bid on a biennial basis

and managed by the Greenway Specialist. The Grand Forks Park District provides maintenance services for areas under its management.

GOPHER AND OTHER PEST CONTROL

Gophers and other burrowing animals pose a danger to the integrity of the flood protection project. Routine surveillance by city personnel and the contractor allows for early detection and response to animal activity.

LANDSCAPING

Flower beds and shrubbery are located at trailhead facilities throughout the project. The Grand Forks Park District provides maintenance of the landscaping managed by their agency. All other landscaping features are handled by contracted labor at the direction of Greenway staff.

MOWING

The Grand Forks portion of The Greenway includes approximately 900 acres of green space that requires a wide variety of maintenance. The criteria used for determining what is needed includes the effects on bank stabilization, use of the area, best management practices, and cost.

POST HIGH WATER CLEANUP

Water levels on the Red River fluctuate



Red River State Recreation Area in East Grand Forks

throughout the year and receding water can leave behind debris. The type and amount of debris varies with each event. It can range in size from small branches to uprooted trees and other large items.

The policy for the cleanup of debris left behind in the Greenway is to allow small amounts of natural debris deposited in the wooded areas to remain in place unless there is a concern for public safety.

If water and debris reach the public areas of the Greenway, cleanup occurs in stages. The immediate response begins with crews removing silt and debris on the upper trails to allow quick reopening of the trail system. The next stage involves the clearing of any debris on the river side of the trail that might hinder mowing or park use. Volunteer labor is sometimes used to remove the small debris that collects in the trees along the river in the downtown area. Larger debris and silt on the trails is removed by city or contracted labor.

RIPARIAN RESTORATION

Riparian restoration provides the opportunity to develop semi-natural areas along the Greenway. This vegetation can add stability to riverbanks that are susceptible to erosion. A riverbank

stabilization and wildflower restoration project was started in 2005 in several areas in the Grand Forks portion of the Greenway. The City of East Grand Forks partnered with Xcel Energy to plant willow stakes along the riverbank just south of the Sorlie Bridge in downtown East Grand Forks.



A golden fall scene in the Greenway

VEGETATION MANAGEMENT

The location of the Greenway along the riverbank provides a fertile breeding ground for all types of vegetation, both desirable and undesirable. Flood waters continually deliver the seeds of noxious and troublesome weeds throughout the system, making complete eradication of the weeds impossible. Staff works to eliminate the growth of any plant labeled as zero tolerance by state agencies. Other weeds are controlled with mowing and herbicide application.

Funding

CITY OF GRAND FORKS

In December 2005, the Grand Forks City Council passed an ordinance to charge a monthly fee to residential and commercial properties to finance the operations and maintenance (O & M) and small capital improvements of the flood protection system and Greenway. This fee is included on the monthly utility bill for residents and businesses.

Fees to residential customers, including single family, apartments, condominiums, town homes, and mobile home parks are charged based on the number of residential units-similar to fees charged for refuse and mosquito services. Fees charged to nonresidential properties are based on

the number of taxable square feet of the property and stormwater drainage factors. Some nonresidential properties-such as governmental and undeveloped properties-were not charged previously for storm sewer service but are now included in the new ordinance.

Funds from the flood protection/Greenway service fee are used to cover the O & M of the flood protection system. This includes the levee and floodwalls, flood pumping stations, English Coulee Diversion Channel, and closure and drainage structures. Greenway O & M expenses are also covered through this fee and include items like administration, mowing, trail maintenance, repairs and replacement of recreational features, minor debris cleanup, and other expenses associated with the operations and management of the Greenway. Expenses for O & M have fluctuated from year to year but average approximately \$227,000 for the years 2009 to 2011.

The original flood protection plan developed by the US Army Corps of Engineers and the City of Grand Forks includes the tools necessary to provide permanent,



Trails in the Greenway in East Grand Forks

comprehensive flood protection for the Grand Forks community. During the planning process it was determined that the Grand Forks community wanted to incorporate extra features, not included in the original plan, to enhance flood protection system and Greenway. Enhancement projects included the Greenway Plan, raising the height of the floodwalls, construction of the Community Green, warming houses, and other recreational features. The Betterment Fund provided financial support for these additions. Money for the Betterment Fund was raised through a special assessment process paid by all property owners in Grand Forks. These special assessments were also used to pay a significant portion of the local share of flood protection/Greenway project construction costs, including O & M expenses, until 2005.

CITY OF EAST GRAND FORKS

In 2009 the City of East Grand Forks voted to charge a monthly Greenway fee for every utility account within the city. This fee is dedicated to the Greenway Capital Fund for capital expenditures on trails and trailheads.

OTHER FUNDING SOURCES

Federal Resources

The recreation portion of the original

Greenway construction was funded as a 50/50 cost share with the US Army Corps of Engineers and the Cities of Grand Forks and East Grand Forks. This included items such as the trail system, restrooms, playground equipment, and signage.

The cost of the two pedestrian bridges was financed through a partnership between the US Army Corps of Engineers and the two cities. The US Army Corps of Engineers provided 50 percent of the bridge construction costs and the two cities split the remaining costs equally.



Ice skating on a winter day

State Resources

Red River Regional Council: In 2005 & 2006 the City of Grand Forks entered into a Memorandum of Agreement with the Red River Regional Council to plant willow stakes at four riverbank locations for bank

stabilization.

Statewide Health Improvement Plan (SHIP)

Polk County, MN: In 2011, the City of East Grand Forks received funding from SHIP to install distance and emergency services locator signs along the loop trail in the Greenway.

SHIP is a program aimed to help Minnesotans live longer, healthier lives by reducing the burden of preventable chronic disease through increased physical activity and healthy eating.

Minnesota Department of Natural Resources

(MN DNR): The City of East Grand Forks received funding from the MN DNR 50/50 grant program to realign a trail in LaFave Park.

ND Game and Fish: The ND Game and Fish Department provided 75% of the funding needed to build two new boat ramps in Grand Forks. Funding has also been given for a boat dock for installation at one of the two boat ramps, to ease the boat loading and unloading process.

Garrison Diversion Conservancy District

(GDGD): During the construction of the flood protection project, the (GDGD) provided funding for the Community Green, an area of the downtown Greenway used to host many special events.

ND Parks and Recreation (NDPR): The NDPR provided funds through the Recreation Trails Program to install a paved connection

between an existing trail and the bike route in Lincoln Drive Park.

Local Resources

City of Grand Forks: The City of Grand Forks cost shared the recreation portion of the Flood Protection project and also funded 100% of the betterments of the project and continues to finance the operations and management of the project.

Grand Forks Park District: The Grand Forks Park District provided funding for two community rooms, which are adjacent to the restrooms in Lincoln Drive and Riverside Parks. The Grand Forks Park District continues a commitment to the Greenway through in-kind and financial assistance for small capital projects.

Private Resources

Friends of the Greenway Fund: The Friends of the Greenway Fund has been established with the Community Foundation of Grand Forks, East Grand Forks and Region. This fund is designated for projects within the Greenway.

Xcel Energy Environmental grant program:

The multi-state energy provider has provided funding for two large plantings in the Grand Forks portion of the Greenway. More than 225 trees have been planted along two trail

corridors and an overlook using volunteer labor from the public and Xcel Energy employees. Funding has also been used to provide decorative plantings in some areas of the Greenway.

University of North Dakota Environmental Law Society (UND ELS): Funding from UND ELS was used to underwrite a tree planting project in collaboration between the UND ELS and a local elementary school. Over 60 small trees and shrubs were planted along the trail north and south of the Grand Forks downtown area.

Roaming Paws: The local dog park advocacy group Roaming Paws provided funding for amenities at Lincoln Drive Park dog park including benches, picnic tables, and

informational kiosks. The funds were a result of several fundraising activities and sponsorship commitments secured by the group.

Rotary Club: The local Rotary Clubs provided funding for amenities in Rotary Park, located in downtown Grand Forks. Funding was also given for a fountain along the riverbank in downtown East Grand Forks.

Riverside Pool: A three year donation was secured through private donors to underwrite the costs of operation and management of the Riverside Pool.

Eagle Scout Projects: Local Eagle Scout candidates have provided several small amenities within the Greenway. The dog waste bag stations, a nature play area and kiosk in the EGF campground have all been designed, built, and funded by the Eagle Scout candidates.

Volunteers: Throughout the year local service groups, schools and other citizens provide valuable service to the upkeep of the Greenway.



The fountain in Rotary Park, downtown East Grand Forks

Programs

ADOPT-A-TRAIL

The Greenway Adopt-a-Trail program is an all-volunteer program that gives the public an opportunity to become actively involved in maintaining the beauty of the Greenway. Anyone interested in adopting a section of trail can submit an application to the managing agency for consideration. The Adopt-a-Trail program requires a minimum commitment of three years.



The Greenway features over 20 miles of paved, multi-purpose trails

AMERICANS WITH DISABILITIES (ADA) ACCESSIBILITY

It is the goal of the managing agencies to provide outdoor recreation opportunities for people of all levels of ability. The Greenway contains many handicap accessible features, including wheelchair accessible picnic tables and playground equipment, maximum five percent

trail grades, and handicap parking.

In 2011 the Greenway Technical Committee convened an ad-hoc subcommittee to review the Greenway policies for the use of Other Power-Driven Mobility Devices in the Greenway by people with disabilities. The results of the committee's findings did not affect any policies for wheelchairs, which are allowed wherever foot traffic is allowed.

It was the recommendation of the subcommittee to allow the use of Other Power-Driven Mobility Devices that were not specifically designed for disabilities on the trail, provided the device is no more than 36" wide and is not powered by an internal combustion engine. All-terrain vehicles (ATV), golf carts or dirt bikes are not allowed as other power-driven mobility devices and may only be used on trails designated for that activity.

GREENWAY TREE PLANTING PROGRAM

This program is an opportunity for the public to purchase a living, growing memorial for a loved one or special occasion. Donors can purchase a tree from a local nursery or donate an already established tree for planting in the Greenway.

Marketing and Promotions

The development and construction of the flood protection system and greenway required a cooperative effort on the part of many departments and agencies. The Greenway Alliance was established in 1998 to work through the issues associated with the construction and governance of the Greenway.

This group oversaw

Marketing was identified in the Greenway Plan as an important factor in developing the Greenway as a tourist attraction and increasing the potential for economic development.

Greenway staff has built valuable relationships with tourism and media outlets, both locally and statewide, to create opportunities for shared marketing campaigns to promote the Greenway and special events.

The marketing and promotion of the Greenway is done through a variety of formats:

- Maintenance of the internet website www.greenwayggf.com
- Regular emails to a large database
- News releases
- Printed brochures with maps and event information
- Other social media

The growing use of social media is an area for expansion for promoting the Greenway. Staff has been exploring an integrated plan for using Twitter, Facebook and other media sharing tools to share information about Greenway events and attractions.

SPECIAL EVENT PERMITS

The Greenway is a popular spot to host races, art shows, and other community events.

Anyone planning to host an event in the Greenway is asked to submit a Special Events permit application to reserve the date and area for their event. This permit provides a one-stop shop for event planners and prevents the overlap of activities in the same area. Permits are available through the Public Information Office at the Grand Forks City Hall or the East Grand Forks Parks and Recreation department in the East Grand Forks City Hall.

PARK USE PERMITS AND RENTALS

The use of most facilities in the Greenway is available at no cost, but reservations are encouraged for picnic shelters and community rooms. These facilities are managed by the Grand Forks Park District and East Grand

Annual Events Held in the Greenway

- Greenway Ski Days
- Winter Fest
- Frozen Feat
- END-IT Iceman Triathlon
- Arbor Day celebration
- Grand Cities Art Fest
- YMCA Firecracker 5 & 10k race
- Sertoma Fun4th & Fireworks
- Family Fun Night and Chalk It Up
- Cats Incredible
- YMCA half marathon
- Down by the Riverside
- Tour De Forks
- Christmas in the Park
- Santa's Village

The Greenway Contact Information

THE GREENWAY

www.greenwayggf.com
greenway@grandforksgov.com
www.facebook.com/greenwayggf

MANAGING AGENCIES

City of Grand Forks

PO Box 5200
255 North 4th Street
Grand Forks, ND 58203
701-738-8746
greenway@grandforksgov.com

City of East Grand Forks

Parks and Recreation
600 DeMers Avenue
East Grand Forks, MN 56721
218-773-8000
www.egf.mn

Grand Forks Park District

1210 7th Avenue South
PO Box 12429
Grand Forks, ND 58208
Main Line: 701-746-2750
Info Line: 701-787-3499
www.gfparks.org

MN Department of Natural Resources

515 2nd Street Northwest
East Grand Forks, MN 56721
218-773-4950
http://www.dnr.state.mn.us/state_parks/red_river/index.html

LaFave Park, East Grand Forks Conceptual Plans

The vision for LaFave Park is to create an area for people of all ages to enjoy, while keeping the natural environment. Some activities offered in the park would include fishing (boat access and shore fishing), a shaded picnic area and a natural playground. This plan also retains the school activities held on this site, such as football games and bonfires. Open turf areas provide locations for family games, street fairs or music festivals.

The picnic area is near the parking lot and within walking distance of the facilities on the dry side of the levee. The tables are near existing trees for immediate shade, and more

shade as planted trees grow. This area has four dedicated tables, but has room for more.

This park is designed for pedestrian safety. The use of “signal trees” (trees with a distinctive quality, such as form or color), bollards to allow pedestrians and non-motorized transportation on trails, and dedicated road crossings will separate pedestrians and motor vehicles.

The riparian area, or “no mow” area, has many benefits, including a naturalized area that slows and filters runoff from rain and snow, is aesthetically pleasing and requires less maintenance.

BOLD and **boxed** items have detailed drawings on preceding pages.



NATURAL PLAYGROUND CONCEPT

Natural playgrounds differ from traditional playgrounds because they feature natural environmental elements versus manufactured equipment. Natural play environments are designed to stimulate children's imagination and engage them in the outdoor world, instead of a structured play area. Natural playgrounds also educate children of natural processes. Natural playgrounds can easily be designed to encourage play at all skill levels. The parking lot has 8 spots (one ADA) and has a turnaround to accommodate vehicular traffic.

Natural playgrounds can be developed as funds become available. This can be a great opportunity for the community or organizations to be involved.

Some features of this play area could include:

- Hedge Maze for exploration, hiding and games
- "Sensory" Garden to explore and stimulate
- Sand River/Lake Play area
- Wetlands Play area
- Natural Slide
- Berm "Field" for hiding and games
- Rock "Pile" for climbing
- Central observation location for guardians
- Bridges to walk over or crawl under
- Wood Wind Chime Station, wheelchair accessible
- Vegetative Enclosures for children's safety



LOOKOUT AREA CONCEPT

This area is located near the trail and provides some of the best views in the park, overlooking the riparian area, the Greenway and the fork of the Red and Red Lake Rivers. Visitor amenities include vegetation and shade for comfort, formal seating (benches), informal seating (boulders), and trash receptacles. This location is perfect for interpretive displays about area history and culture.



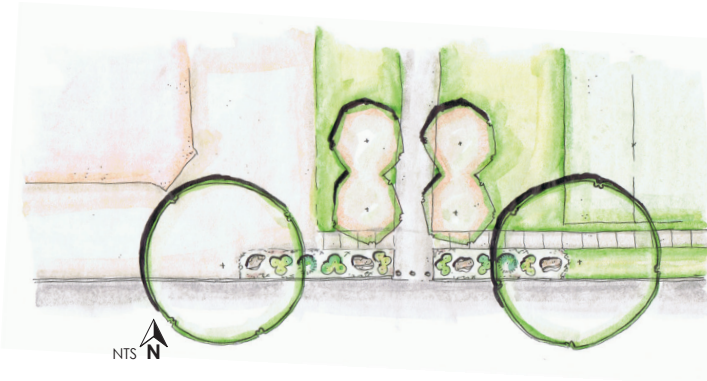
PARKING LOT

This lot allows plenty of parking for vehicles and boat trailers. It is designed to hold 15 vehicles (2 ADA spots) and 8 boat trailer spots. The parking lot provides pull-up and back in parking away from the road for safety. Trees within the lot provide shade and cooling for surrounding areas, and act as a visual buffer. Curb and gutter deter vehicles driving off dedicated roadway. The grass areas surrounded by impervious material can accommodate stormwater runoff and filter the water to prevent contaminated water from the parking lot running directly into the river. Two areas within the park are dedicated overflow parking for high traffic events.



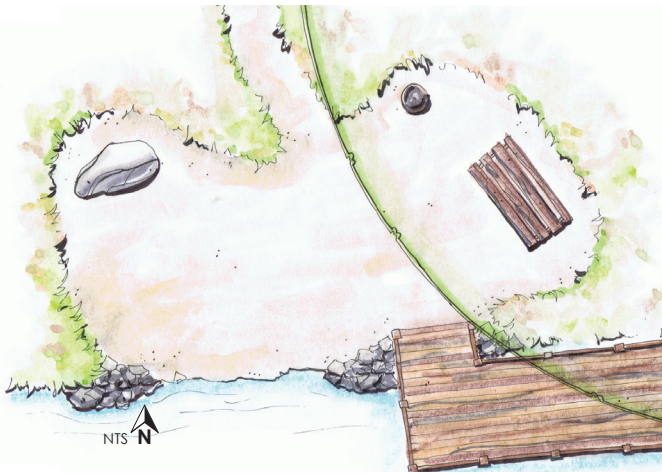
LANDSCAPING ALONG ROAD CONCEPT

This area originally provided a partially paved road for motor vehicle access to the riverbank. Motor vehicle traffic is no longer desired along the riverbank because of the detrimental affects to the vegetation and riverbank. Permanent features like curb and gutter, bollards, vegetation and boulders will deter vehicle traffic. No area will be wide enough to allow vehicle access.



FISHING ALONG SHORE

This image suggests a typical location along the riverbank that allows fishing. This area features graveled or small aggregate base with access to the roadway, formal seating (bench), informal seating (boulder), an adjustable fishing platform and trash receptacle.



LANDSCAPED CORNER

An existing gravel road continues southwest off the paved road, toward the river, encouraging unwanted vehicular traffic. Adding vegetation and boulders to this area would limit vehicle access and signal that this area is no longer drivable. Grasses and trees will fill in the riparian area. No area will be wide enough to allow vehicle access.



The Greenway

Grand Forks / East Grand Forks



For more information about the bikeway system in Grand Forks and East Grand Forks please call

THE GREENWAY

GRAND FORKS / EAST GRAND FORKS

The flood of 1997 dramatically altered the landscape of Grand Forks and East Grand Forks. More than 56,000 people were evacuated before waters of the Red and Red Lake Rivers crested at a record high level of 54 feet. Seventy-five percent of Grand Forks and ninety-five percent of East Grand Forks were inundated with water. The cities made national headlines as eleven of Grand Forks' downtown buildings burned. To ensure that Greater Grand Forks would be protected against future flooding, the US Army Corps of Engineers proposed the construction of a flood protection system, including a Greenway, along the Red and Red Lake rivers.

The Greenway provides a unique opportunity for year-round outdoor recreational activities in the Greater Grand Forks area. With approximately 2,200 acres of open space, vegetation, and recreational amenities, there's something for everyone in the Greenway.

LEGEND

YOU ARE HERE	Disc Golf
Hiking Trail Access	Softball Fields
Biking Trail Access	Basketball Courts
Information/Kiosk	Tennis Courts
Parking	Sand Volleyball
Restrooms	Pickleball
Picnic Area	Horseshoe Pits
Playground	Wildflower Garden
Wildlife Observation Area	River Level Monument
Campground	Labyrinth
Recreation Area Office	
Trailer Sanitation	
Boat Access	
Rapids	
Swimming Pool	
Fishing Access	
Athletic Fields	
Golf Course	
Dog Park	

City of Grand Forks, ND
 Grand Forks Park District
 East Grand Forks Parks
 Red River State Recreation Area
 Permanent Flood Protection System
 Paved Trails
 Trail Mileage between points

City of Grand Forks
 City Hall
 255 N. 4th St.
 P.O. Box 5200
 Grand Forks, ND 58206-5200
 Phone: 701-745-4636
 Web: www.greenwayggf.com

East Grand Forks Parks and Recreation
 City of East Grand Forks
 600 Demers Ave.
 P.O. Box 321
 East Grand Forks, MN 56721
 Phone: 218-773-8000
 Web: www.egf.mn

Grand Forks Park District
 1210 - 7th Avenue South
 P.O. Box 12429
 Grand Forks, ND 58208-2429
 Phone: 701-748-2750
 Web: www.gfparcs.org

Red River State Recreation Area
 P.O. Box 529
 515 2nd St. NW
 East Grand Forks, Minnesota 56721
 Phone: 218-773-4950
 Web: www.dnr.state.mn.us



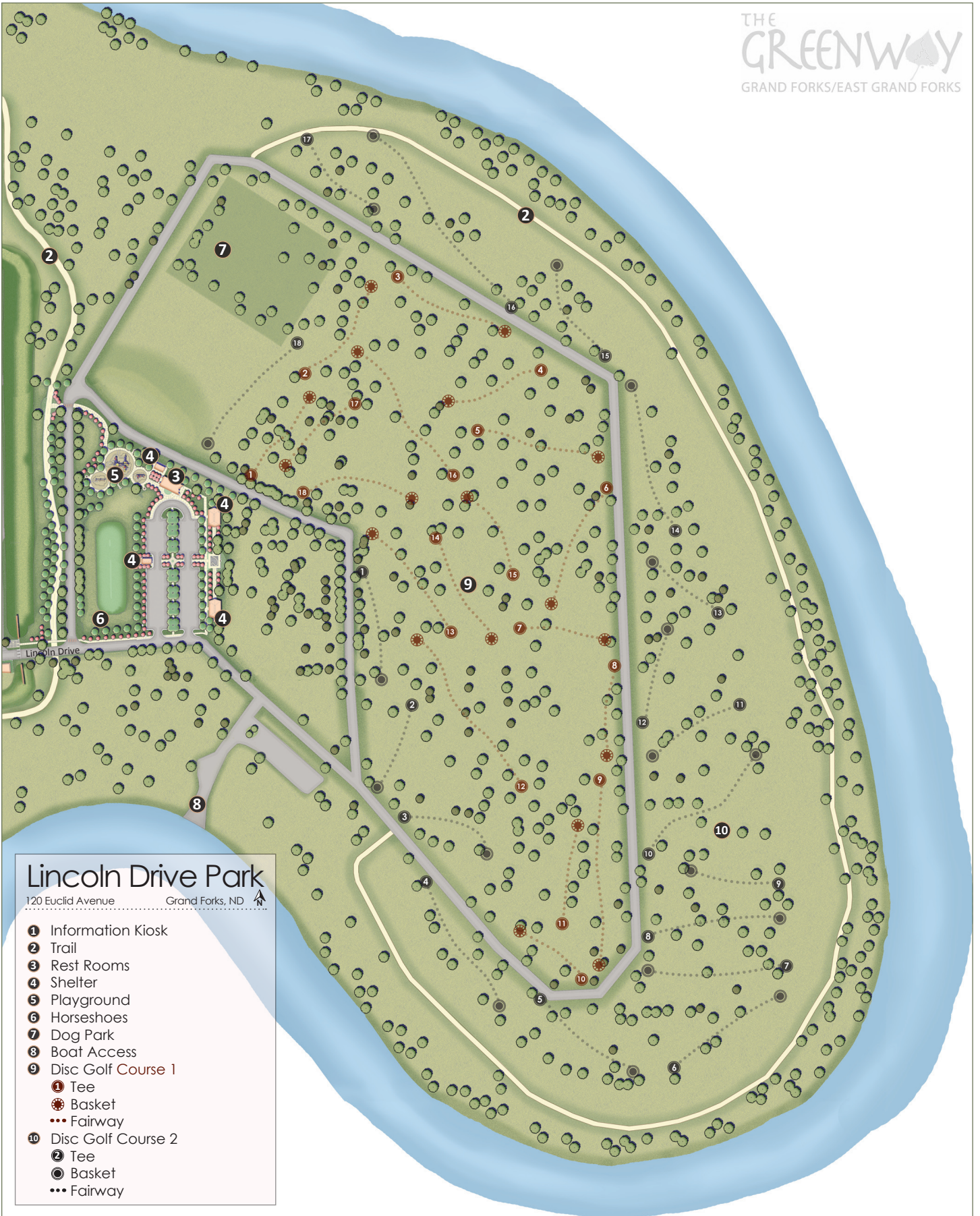
Map Updated: April 2012



Like us on Facebook

Web: www.greenwayggf.com
 Email: greenway@grandforksgov.com

Please consult GF / EGF Bikeway Map for connection to metro-wide trail system



Lincoln Drive Park

120 Euclid Avenue Grand Forks, ND



Riverside Park
100 North 1st Street Grand Forks, ND

- 1 Information Kiosk
- 2 Trail
- 3 Riverside Pool
- 4 Rest Rooms
- 5 Shelter
- 6 Playground
- 7 Tennis Courts
- 8 Basketball Court
- 9 Disc Golf Course (future)
- 10 To Riverside Rapids

Eagle Point

1st Street SE, East Grand Forks, MN

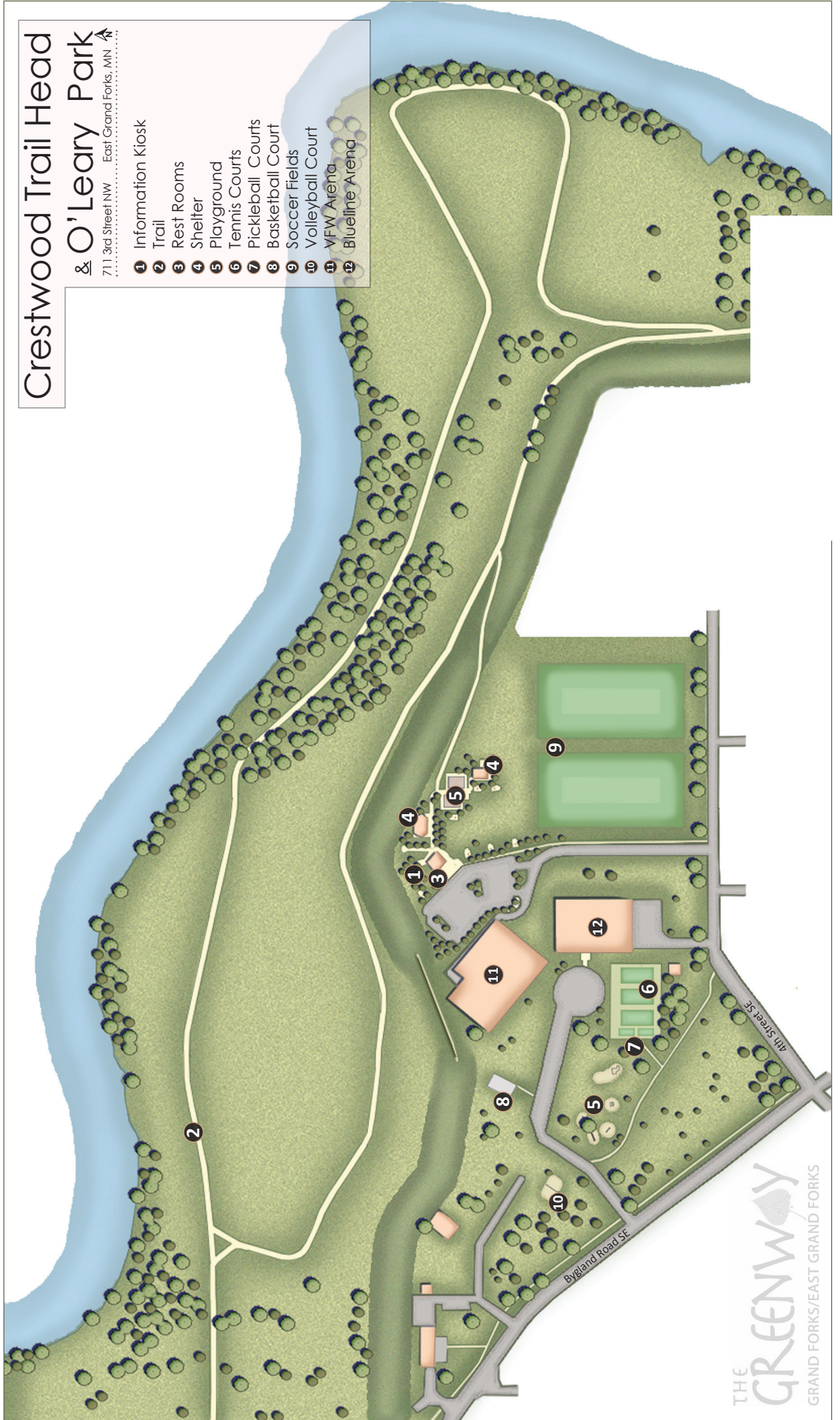
- 1 Information Kiosk
- 2 Trail
- 3 Rest Rooms
- 4 Shelter
- 5 Look Out Point
- 6 Boat Access
- 7 Rapids
- 8 Pedestrian Underpass
- 9 Disc Golf Course
- 1 Tee
- 2 Basket
- 3 Fairway

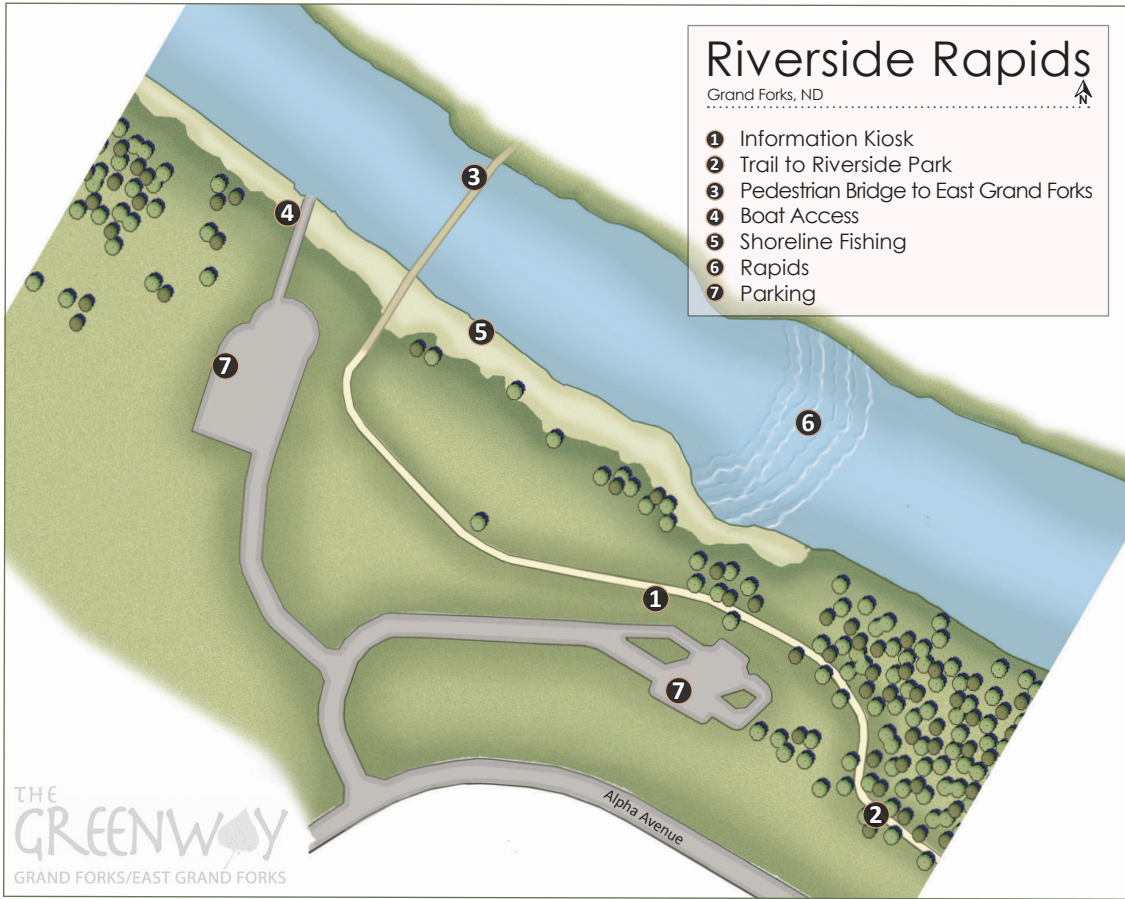


Crestwood Trail Head & O'Leary Park

711 3rd Street NW East Grand Forks, MN

- 1 Information Kiosk
- 2 Trail
- 3 Rest Rooms
- 4 Shelter
- 5 Playground
- 6 Tennis Courts
- 7 Pickleball Courts
- 8 Basketball Court
- 9 Soccer Fields
- 10 Volleyball Court
- 11 VFW Arena
- 12 Blueline Arena





Appendices

Agreement between City of Grand Forks and Grand Forks Park District

Agreement between City of East Grand Forks and Minnesota Department of Natural Resources

Greenway Special Projects request form

Greenway Rules and Regulations

Vegetation Management policy

Adopt-a-Trail form

Policy of Other Power-Driven Mobility Devices

Greenway Tree Planting program

Operations and Management Fee Ordinance - Grand Forks

Greenway Trail Maintenance Fee- East Grand Forks

Special Events permit application

Park reservation and shelter permit - Grand Forks Park District

Greenway Technical Committee: User Rules and Regulations

PURPOSE

There are four governmental agencies involved in the management of the Greenway project. Each agency has specific commandments and needs regarding the regulation of recreational use of land within their jurisdiction. In order to provide a uniform and seamless governing body, a standard Greenway Rules and Regulations will be developed and adopted by the managing agencies of the project.

OBJECTIVES

1. Develop a body of rules and regulations that meets the unique needs of the Greenway project and it's managing agencies;
2. Adoption of the rules and regulations of the Greenway project by all managing agencies;

DEFINITIONS

Managing Agency: The agency responsible for the maintenance and upkeep of a specific area in the Greenway system.

Motor vehicle: Any self-propelled vehicle including, but not limited to, automobiles, trucks, dune buggies, minibikes, motorcycles, trail bikes, and all terrain vehicles (ATV's), but not including snowmobiles.

SPECIFIC ITEMS

Rules Enforcement Policy

Laws will be enforced by the applicable agency.

Individuals violating these rules will receive a verbal

or written warning, an administrative complaint, a civil summons, or loss of park privileges.

All persons violating these rules may be penalized in accordance with the ordinances and statutes of the Managing Agency. Persons violating other applicable laws within the Greenway may also be punished in accordance with the provisions of those laws. In addition, persons violating these rules may be required to immediately leave the Greenway, and the Managing Agency may revoke the privilege of any person who violates these rules to enter the Greenway for a specific period.

Special Events

Special events and commercial uses or operations within the Greenway may only be conducted with a written permit from the Managing Agency obtained prior to the event, or under contract, lease, or other written agreement from the Managing Agency. The Managing Agency shall establish and may charge fees for special events and commercial uses of Greenway and state parks land.

No person, firm, or corporation may operate any concessions, business, enterprise, or sell personal property within the Greenway without prior written permission from the Managing Agency of the area of proposed activity.

Some areas, specifically the Red River State

Recreational Facility, require user fees. The Managing Agency may from time to time establish fees for the use of other park areas by the public.

No person shall engage in or solicit business of any nature whatsoever from visitors, or to post signs, handbills, or advertisements, except for authorized concessions, without the prior written consent of the Managing Agency.

Hours of Operation

Regular day use hours within the Greenway are 5:00 AM to 11:00 PM. Red River State Recreational Facility hours are 8:00 AM to 10:00 PM.

During periods of forest fire danger or other emergency conditions, the Managing Agency may close the Greenway or any portion thereof. No person may enter or remain in closed areas except as authorized by the Managing Agency.

Please consult the Managing Agency identified on the Greenway map for more information regarding a specific area.

Personal Conduct and Prohibitions

Alcoholic beverages are allowed in designated areas only. Glass bottles are not permitted.

Personal Conduct

Disorderly Conduct: No person shall engage in brawling or fighting, use offensive, obscene, or abusive language, or engage in boisterous, noisy, or

threatening conduct reasonably tending to arouse alarm, anger, or resentment in others.

Drugs: A person's possession and use of drugs shall be in accordance with state laws.

Noise: No person may create a disturbance that impairs the enjoyment of the Greenway by others.

Public Safety; Hunting; Firearms; Weapons

Hunting and trapping are prohibited within the Greenway, unless otherwise authorized by the Managing Agency. Use or possession of any firearm, bow and arrow, sling shot air rifle, paint ball gun or pistol is prohibited. Firearms may be transported through the Greenway if kept in car trunk, or otherwise inaccessible to use. Bows may be transported through the Greenway if unstrung or enclosed in a case.

Environmental Protection

The use of metal detectors is strictly prohibited, except as authorized by the Managing Agency.

It is unlawful to damage, deface or remove any park facilities, including picnic tables, vegetation and park signs.

No person may remove any natural or cultural object from the Greenway. Possession of paint or marking materials, or tampering with, altering, or removing any sign, marker, or structure is prohibited.

Driving nails or permanently installing any object is prohibited. No person shall paste, glue, tack, or otherwise post any sign, placard, advertisement,

or inscription whatsoever in areas other than areas designated for such purpose.

Research studies conducted on dry land within the Greenway require a special use permit issued by the Managing Agency. Request for use of the Greenway for research studies must

be submitted to the Managing Agency in writing nine months in advance of the proposed research except, as expressly authorized by the Managing Agency.

Chainsaws, generators, and other power equipment may not be operated within the Greenway, except as authorized by the Managing Agency.

Fires and Refuse

Fires or other cooking or heating devices are permitted only in designated areas. No person may leave a fire without totally extinguishing it, nor discard any burning cigarettes, cigars, matches, or any other burning material within the Greenway.

The collection of firewood within the Greenway is strictly prohibited.

Personal fireworks are not permitted within the Greenway. Public displays of fireworks require a permit from the appropriate Managing Agency of the proposed display location.

No person shall bring in or shall dump, deposit, or leave any bottles, broken glass, fish or fish parts,

ashes, paper, boxes, cans, dirt, rubbish, waste, garbage, or refuse; or other trash. No such refuse or trash shall be placed in any waters in or contiguous to any park, or left anywhere on the grounds. All trash must be placed in the proper receptacles where these are provided; where receptacles are not so provided, all such rubbish or waste shall be carried away from the park by persons responsible for its presence, and properly disposed of elsewhere.

Recycling is encouraged in all parks.

Pets

Pets are allowed in most areas, but must be under physical control at all times on a leash.

Owners are responsible for cleaning up after their pets. Horses are allowed by permit only, in designated areas.

Feeding of wildlife is prohibited, unless authorized by the Managing Agency.

Picnicking

No person or group of persons shall unreasonably exclude others from a picnic area or shelter, except when the shelter has been reserved with consent of the Managing Agency.

Boating

The use of motorboats or outboard motors in the Greenway is permitted. Please familiarize yourself with the boating regulations of both states. Information is available at most area Chambers of Commerce, visitor centers and various

retail merchants.

Fishing

General North Dakota and Minnesota fishing laws and the rules of the North Dakota and Minnesota Game and Fish Agencies apply within the Greenway. Appropriate fishing licenses are required.

Swimming

Swimming is strictly prohibited within the Greenway.

Storage and Abandonment of Personal Property

All properties left in the Greenway and not registered with the Managing Agency will be disposed of as abandoned property.

Motor Vehicles and Snowmobiles

No person, except authorized agents of the Greenway, shall drive or may operate any vehicle, including, but not limited to, automobiles, trucks, minibikes, mopeds, motorcycles, snowmobiles, and all-terrain within the Greenway, except on roads or designated parking areas. Unless specifically designated, all-terrain vehicles are not permitted within the Greenway. No person shall operate any vehicle within the Greenway so as to endanger any person or property, nor in excess of the posted speed limit. Motorized trail bikes and all terrain vehicles are prohibited within the Greenway. Bicycles are allowed on maintained roads and trails only.

No person, except authorized agents of the Greenway shall drive or operate a motor vehicle in any park

except on roads or designated parking areas. Motor vehicles may be parked only in designated parking areas or parking spurs. Motor vehicles may not be driven on roads that are posted, chained, or gated, unless authorized by the Managing Authority. Parking in an area not designated as a parking area is prohibited and subjects the vehicle to being towed at the owner's expense. Overnight parking is permitted in approved areas only. Motor vehicles must heed all posted speed limits.

All vehicles must park in designated areas.

A motor vehicle shall not be operated in excess of posted speeds or in a reckless, careless, or exhibitiv manner. No person shall operate a vehicle in such a manner as to create unnecessary engine noise, tire squeals, skidding, or sliding.

Snowmobiles

Snowmobiles are allowed on designated routes only. Posted speed limits must be obeyed at all times. All trails are for specified use only; violators will be ticketed.

ADDITIONAL ITEMS

The Managing Agency shall have authority to promulgate rules and establish regulations to protect and regulate use of public parks and facilities within their jurisdiction, which rule and regulations shall be effective upon approval of the appropriate governing bodies. Said regulations may relate to hours, operation or recreational programs and other items

reasonably designed to protect the public interest.

Any member of the public aggrieved by the rules so promulgated or the regulations established by the Managing Agency, may appeal said rules to that agency and that agency shall rule on said appeal.

Suspension of Rules

In situations of emergency or in the case of authorized special events, the Managing Agency may provide temporary exceptions to these regulations by posting notice of the exception at the site.

The facilities, programs and employment procedures are open to all regardless of age, sex, race, color, disability, religion, national origin, or political affiliation. Contact us prior to your visit if you need an accommodation for a disability.

Revised February 18, 2003